

### Legend

**Existing Features**

- Subject Property
- Provincially Significant Wetland (MNR)
- Wetland (ORE, 2013)
- Easement
- Existing Roadway
- Existing Well Location (with 15 m buffer)
- Topographic Contours
- Water Course & Flow Direction

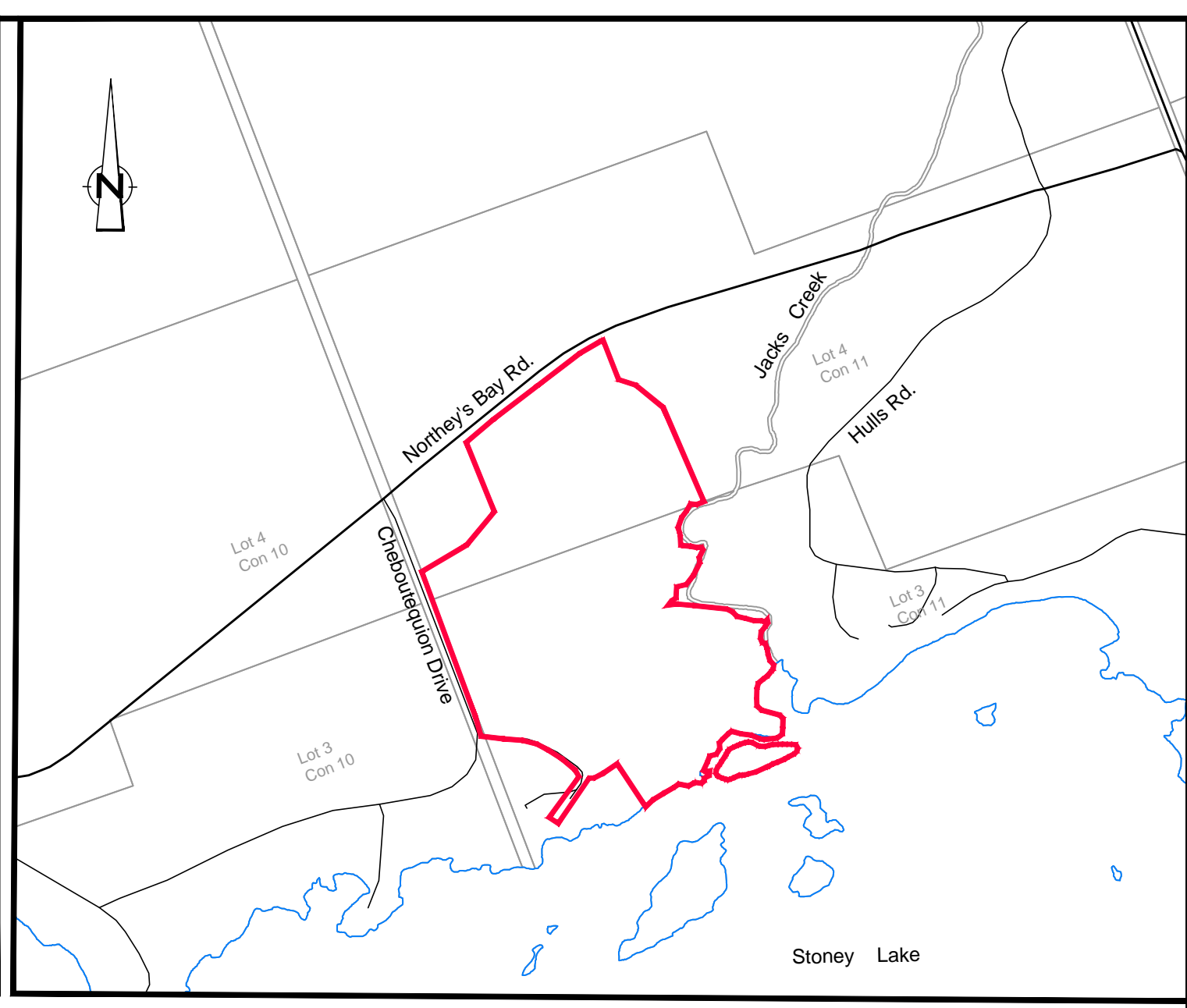
**Proposed Vacant Land Condominium**

- Exclusive Use Units 15.43ha

**Proposed Common Elements Condominium**

- Block 1 - Common Elements (recreation) 1.31ha
- Blocks 2 & 3 - Common Elements (roadway) 2.11ha
- Blocks 4 to 7 - Common Elements (open space) 10.11ha

Unit #	Area (ha)
1	0.44
2	0.56
3	0.51
4	0.55
5	0.55
6	0.66
7	0.57
8	0.51
9	0.58
10	0.50
11	0.51
12	0.53
13	0.52
14	0.50
15	0.53
16	0.46
17	0.44
18	0.46
19	0.47
20	0.46
21	0.50
22	0.51
23	0.55
24	0.57
25	0.51
26	0.49
27	0.43
28	0.54
29	0.50
30	0.53



**Key Map**  
Scale 1:10,000

**OWNERS CERTIFICATE**  
I hereby authorize EvoVue Consulting Services Inc. to prepare and submit this plan to the County of Peterborough.

Pieter Venema  
Signature \_\_\_\_\_ Date \_\_\_\_\_

**SURVEYOR'S CERTIFICATE**  
This Draft Plan accurately shows the boundaries of all lands proposed to be subdivided. Certified by:

Shawn M. O'Connor \_\_\_\_\_ Date \_\_\_\_\_  
Ontario Land Surveyor

**Submission Requirements**

- ADDITIONAL INFORMATION REQUIRED UNDER SECTION 51-17 (A-L) OF THE PLANNING ACT
- a) As shown on this Draft Plan
  - b) As shown on this Draft Plan
  - c) As shown on this Draft Plan
  - d) Seasonal Residential
  - e) As shown on this Draft Plan
  - f) As shown on this Draft Plan
  - g) As shown on this Draft Plan and the report by Oakridge Environmental (property is predominately wooded)
  - h) refer to report by Oakridge Environmental
  - i) refer to report by Oakridge Environmental
  - j) As shown on this Draft Plan
  - k) Hydro, Telephone, Private Services
  - l) As shown on this Draft Plan

**EcoVue Consulting Services Inc.**  
311 George St. N., Suite 200  
Peterborough ON K9J 3H3  
Tel: 705-876-8340 Fax: 705-742-8343  
www.ecovueconsulting.com

DRAWN BY:	PM	PROJECT No.:	14-1468
APPROVED BY:	HS	HORIZ. SCALE:	1:1,500
REVISION DATE:	April 3 2017	PLOT DATE:	May 23 2017

**Pilgrims Rest Condominium**  
Part of Lot 3 and 4 Concession 11  
Burleigh Ward, Township of North Kawartha